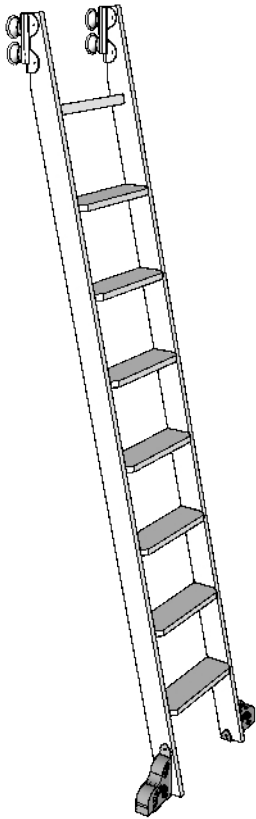


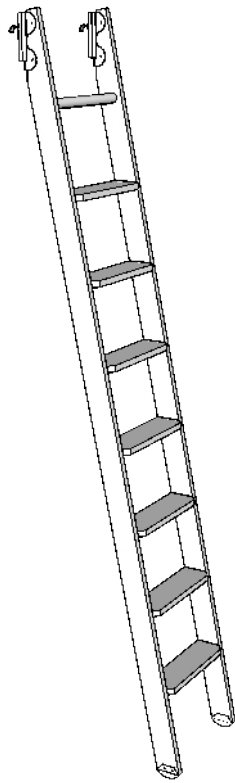
ORDER GUIDE

1. CHOOSE YOUR HARDWARE TYPE

ROLLING HARDWARE KIT

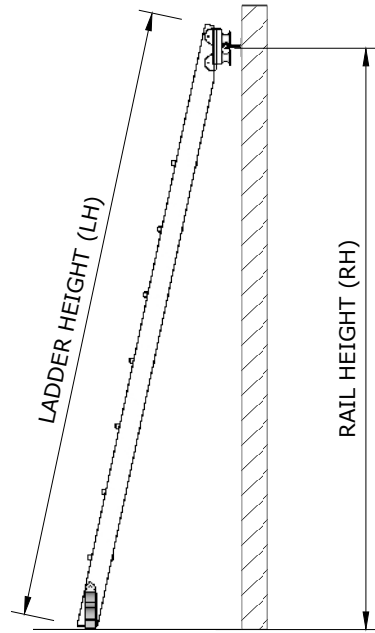


HOOK OVER HARDWARE KIT



<p>Kit includes: x2 top rollers x2 Bottom wheeled & braking feet x7 ladder tread support bars</p>	<p>Kit includes: x2 top hooks x2 non slip feet x7 ladder tread support bars</p>
--	--

2. CHOOSE YOUR LADDER HEIGHT

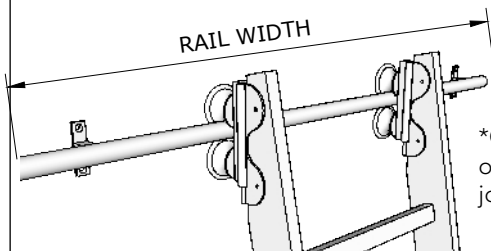


STANDARD LADDERS ARE 16INCHES WIDE

- LH - 7ft Ladder (2140mm) = RH 2010mm
- LH - 8ft Ladder (2440mm) = RH 2310mm
- LH - 9ft Ladder (2750mm) = RH 2620mm
- LH - BESPOKE

All our ladders are 16inches wide. Ladders are supplied unassembled (pre-drilled holes for fasteners, cut dados for steps) and unfinished (sanded to 120-grit).

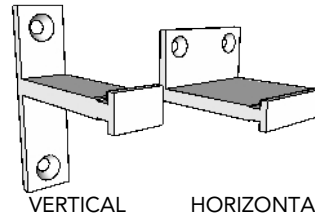
3. CHOOSE THE WIDTH OF YOUR RAILS



6FT WIDE
8FT WIDE

*Can be cut down onsite or joined together with a joining kit

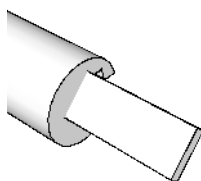
4. CHOOSE THE TYPE OF BRACKET TO HOLD UP YOUR RAIL



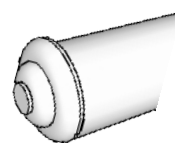
VERTICAL HORIZONTAL

*You need x1 bracket every 3 feet.

5. ADD A JOINING KIT IF YOU WANT TO JOIN TWO LENGTHS OF RAIL TOGETHER



6. FINISH YOUR RAILS WITH AN END CAP KIT



(KIT INCLUDES X2)